

## High Frequency Mobile Digital FPD C-arm System

# PLX C1320A



### Technical Specification

**Package:** 2500\*1200\*1480mm, total 4.5m<sup>3</sup>, Gross weight: 650kg, Net Weight: 500kg

### I. Application:

Emergency Department, General Surgery, Spine Surgery, Orthopedics, Urology, Gynecology, Trauma, Pain Management, Plastic Surgery, Operating Room etc.

### II. Configuration:

1	C-arm new design mainframe	1 set
2	Combined high-frequency high-voltage X-ray generator monoblock (5.0kW, 110 kHz, 40-120kV)	1 set
3	Thales Imported 9*9 inch Dynamic flat panel detector	1 set
4	Medical using ultra-low illumination digital radiography	1 set
5	Digital acquisition workstation software	1 set
6	Imported dense grain grid	1 set
7	Electrical adjustable beam (collimator)	1 set
8	19 inch IM medical LCD monochrome monitor	3 sets
9	Unique hand-held controller	1 set
10	Footbrake exposure	1 set

### III. Advantages:

## Larger field of view

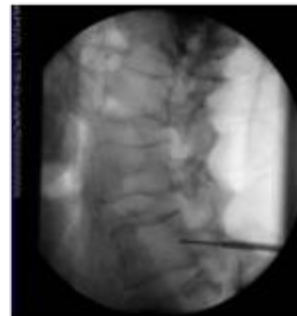
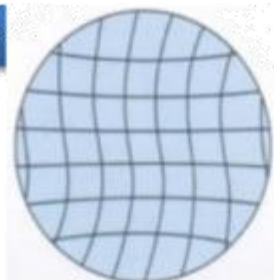
Direct digital imaging effectively avoids the loss of information, edge-to-edge images, avoiding geometric distortion

**smart FPD**



- Intraoperative large field of vision
- (effective field of view increased by 22%)
- Image without distortion
- (Improve surgical reliability )

**image intensifier**

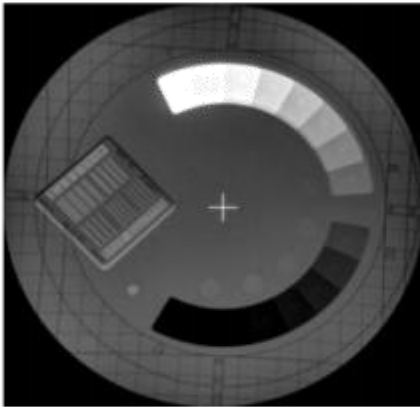


- Small field of view,
- Less effective information
- The image is round
- Edge deformity

## Higher pixel range, wider dynamic range

### image intensifier

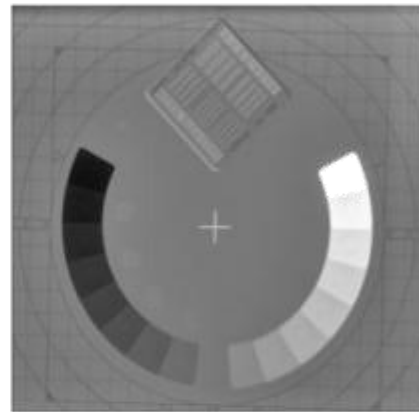
- Output grayscale 12bit
- Wire pair resolution 1.8LP/mm
- Only 1 million pixels



**VS**

### dynamic FPD

- Output grayscale 16bit (16 grayscale depth)
- Limit resolution 3.2LP/mm (high density resolution)
- Nearly two million pixels



## Intelligent image processing system



1、Image processing software : RCDPS  
(**Rapid dynamic image processing system**)  
multi-resolution image enhancement  
processing technology, meet clients  
vairity requirements

2、Precise processing technology:  
different precise processing for specific  
parts

3、Intelligent variable- frequency  
technology to ensure lower dose  
and sharper image

## Intelligent dosage control and operation mode

1. **Intelligent dose control technology**, achieve lower dose and sharper image at any condition, real-time dynamic image optimization to realize best image quality at any time.
2. **Advanced human graphical programming technology** for easier operation.
3. **Accurate APR parameter settings**. Various body parts and shape up to hundreds of exposure parameters setting. Customized parameter settings available.



## Low Dose, Ultra-Definition Image



#### IV, Technical specification:

Category	Items	Content
Generator	Power supply High frequency inverter	Power output: 5.0kW Main inverter frequency: 110 kHz
	Automatic fluoroscopy	tube voltage 40 kv~120kv, adjust automatically tube current : 0.3mA~4mA adjust automatically
	Manual fluoroscopy	tube voltage 40 kv~120kv, continuous tube current : 0.3mA~4mA continuous
	Pulse fluoroscopy	tube voltage 40 kv~120kv, continuous tube current : 0.3mA~30mA continuous
	Photography tube voltage, mA	40KV~120KV, 25mA~100mA, 1.0mAs~280mAs
X-ray tube	X-ray tube special for high frequency (Domestic)	Dual focus:0.6/1.2mm thermal capacity: 650kJ (867kHu)
Imaging system	Detector	Imported 9*9 inch Dynamic flat panel detector A-205um 1024×1024 2.5-pair small board (Yirui)
	Monitor	19" medical LCD monochrome display *3 sets
	Workstation software	Image W/L adjust, grayscale conversion, interest area balance, turn, noise reduction, enhancement, smoothing, sharpening, compression, zoom, measure, mark, print layout, Dicom image sending, Dicom image print and movie playback, etc.
Structure and performance	Direction wheel and main wheel	Direction wheel can rotate in any direction, and main wheel can rotate in $\pm 90^\circ$ .
	C-arm movement	The up and down(motorized): 400mm. Forward and backward movement: 200mm; Revolution around horizontal axis : $\pm 180^\circ$ ; Revolution around vertical axis: $\pm 15^\circ$ , Distance from focus to screen: 1000 mm; C-arm open distance: 800mm C-arm arc depth: 660mm; Slipping on orbit : $135^\circ$

#### V.Features:

- 1、 With a compact appearance, light design, easy to operate

- 2、 Unique base electric auxiliary support arm design, it's more security for using.
- 3、 A unique hand-held controller design, convenient to operate working mode.
- 4、 With a high-quality knockdown X-ray generator to reduce radiation.
- 5、 With the Perspective KV , MA automatically track fluoroscopy to make the image brightness and clearness optimum
- 6、 imported FPD 9\*9inch acquisition,ensure sharp image .
- 7、 Workstation:  
Registration: registration, medical records, Worklist  
Collection: Start collection; prepare video, reset, horizontal mirror, vertical mirror, window adjustment, magnifying glass, negative image  
Open silhouette, edge enhancement, recursive noise reduction  
Processing; four windows, nine windows, sharpening, horizontal mirror, vertical mirror, text annotation, length measurement  
Paper Report: save, preview, expert annotation.  
Dicom features: Dicom browsing, web service , Dicom3.0 interface to connect with PACS, OR HIS SYSTEM, and dry film printer
- 8、 Automatic dynamic motion detection when fluoroscopy to avoid movement-related blurring, no silhouette.
- 9、 Human graphic interface on workstation for select different body parts ;like children, or adult, lateral or formal standing to do exposure.
- 10、 3 sets synchronous monitors to help doctor have a great observing experience.
- 11、 Error Code alarming for overloading of current, kv, or power and any problems.
- 12、 Equipped with emergency stop button to suddenly failure or wrong operation.